



**focus  
germany**

**film  
funding  
and  
locations**

# national funding

## the german federal film board (ffa)

The FFA is one of Germany's national film funding institutions with an annual budget of around €76 million financed by a film levy from the industry itself. The FFA supports feature films at all stages of production and exploitation. For more information visit [www.ffa.de/funding](http://www.ffa.de/funding).

## the german federal film funds (dfff I & dfff II)

The German Federal Film Fund (DFFF I) is an initiative by the Commissioner of Culture and the Media (BKM) to strengthen film production in Germany. If you produce your feature, documentary or animated film in Germany and spend at least 25% of your budget here, you can obtain a non-repayable grant up to 20% of the approved costs – depending on your German spend even up to 25%. In 2017, the German Federal Film Fund II (DFFF II) was established as a supplement to the existing DFFF I in order to target funding at major productions.

### who is eligible

- DFFF I: International co-productions with German co-producers
- DFFF II: production service providers with responsibility for commissioned films or film sequences (e.g. production studios or VFX service-providers in Germany)

### basic criteria

Applications have to be submitted at least six weeks prior to principal photography. Between 50% and 75% of the financing must be in place. The project must obtain a certain number of points in the test of cultural characteristics.

### DFFF I

- Minimum budget: features = €1 million; animation = €2 million; documentaries = €200,000
- The German participation of an international co-production must be at least 20%. A German contribution of €5 million is sufficient if the total production costs exceed €25 million.
- If the total production costs exceed €20 million, at least 20% of the total production costs must be spent in Germany.

### DFFF II

- Overall production costs of at least €20 million
- The German production costs of the film or film segment assigned to the German service provider must be at least €8 million.
- The given non-repayable grant awarded can be up to 25% of the approved costs, but not be more than €25 million per project.

For more information [www.dfff-ffa.de](http://www.dfff-ffa.de)

## the german motion picture fund (gmpf)

The German Motion Picture Fund was set up by the German Federal Ministry of Economic Affairs and Energy with an annual budget of €10 million to strengthen the competitiveness and innovative capacity of Germany as a film location. The fund awards non-repayable grants (up to 20% of the approved costs) for the production of feature films, international high-end drama series and productions with a major spend on digital filmmaking (VFX, digital postproduction, etc.) in Germany.

### who is eligible

- German-based co-producers

### basic criteria

- Overall production costs of at least €25 million for feature films and €1.2 million per episode for series. The minimum German spend is set at 40% or €13 million (for feature films) or €10 million (for series). The minimum German spend of 40% does not apply if €3 million are spent on digital filmmaking in Germany.
- 75% of the financing must already be in place.
- The film must be commercially released in Germany (cinema or VoD), and series must be distributed on German TV or VoD-platforms accessible in Germany.
- GMPF's financial support is awarded in the form of a non-repayable grant.

For more information [www.bmwi-gmpf.de](http://www.bmwi-gmpf.de)



## focus germany film funding & locations

George Clooney, Kate Winslet, Ben Kingsley, Hilary Swank, Matt Damon, Cate Blanchett, Rupert Everett, Diane Kruger, Brad Pitt and Jennifer Lawrence – they've all heard the good news.

The good news about Germany's seemingly limitless range of shooting locations – from Alpine castles to sandy beaches, from primeval forests to modern urban skylines and a vibrant capital full of historic architecture -, the world-class crews, and state-of-the-art studios and postproduction facilities. And not to forget Germany's diversified network of national and regional film funds offering a myriad of financing possibilities to international producers seeking backing for their next film project.

### focus germany – your guide to filmmaking in Germany

Focus Germany is the umbrella organisation of eight German regional film funds, supplying the lowdown on the respective funding programmes and their film industry infrastructures.

So, if you would also like to hear the good news about shooting in Germany, don't hesitate to get in contact with us. We're looking forward to working with you!

contact us!

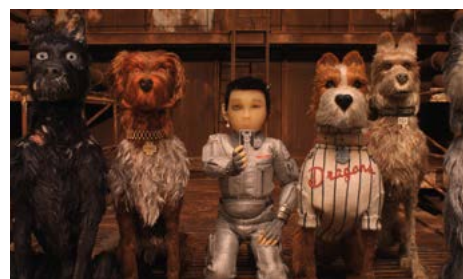
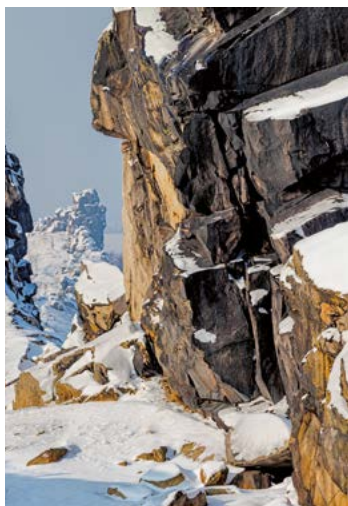
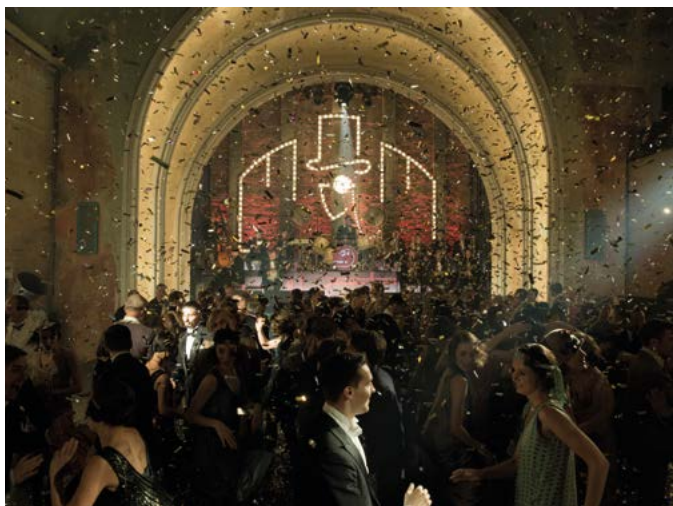
Find us at

[www.focusgermany.de](http://www.focusgermany.de)



From the seaside to the Alps, from unique rural idylls with lakeside chateaus to the vibrant spirit of big cities, from places full of history to futuristic architecture and skyscraper skylines:

## Germany offers great opportunities for making marvellous movies.



## regional funding

### how to get regional funding

The application procedure is basically the same at each of Focus Germany's eight member institutions.

The most important thing to remember is that you will need a German co-producer.

Focus Germany's members allocate around €170 million in soft loans each year to support excellent filmmaking and projects of outstanding quality.

### those eligible for funding are ...

→ Almost all genres and formats prior to shooting – from mainstream to arthouse, from short film to high-end drama series, from animation to documentary, from drama to comedy.

→ All phases of production – from development and preproduction through production to sales and distribution.

Film projects likely to generate cultural and economic 'regional effects'.



# key information

**1. nordmedia // lower saxony & bremen**  
Expo Plaza 1 // 30539 Hannover  
+49 511 123 456-0 // [www.nordmedia.de](http://www.nordmedia.de)

**Film Funding** Jochen Coldewey  
[j.coldewey@nordmedia.de](mailto:j.coldewey@nordmedia.de) // +49 511 123 456-50  
**Film Commission** Susanne Lange  
[s.lange@nordmedia.de](mailto:s.lange@nordmedia.de) // +49 511 123 456-53  
→ annual budget €11 million

**2. film- und medienstiftung nrw // north rhine-westphalia**  
Kaistraße 14 // 40221 Düsseldorf  
+49 211 93 05 00 // [www.filmstiftung.de](http://www.filmstiftung.de)

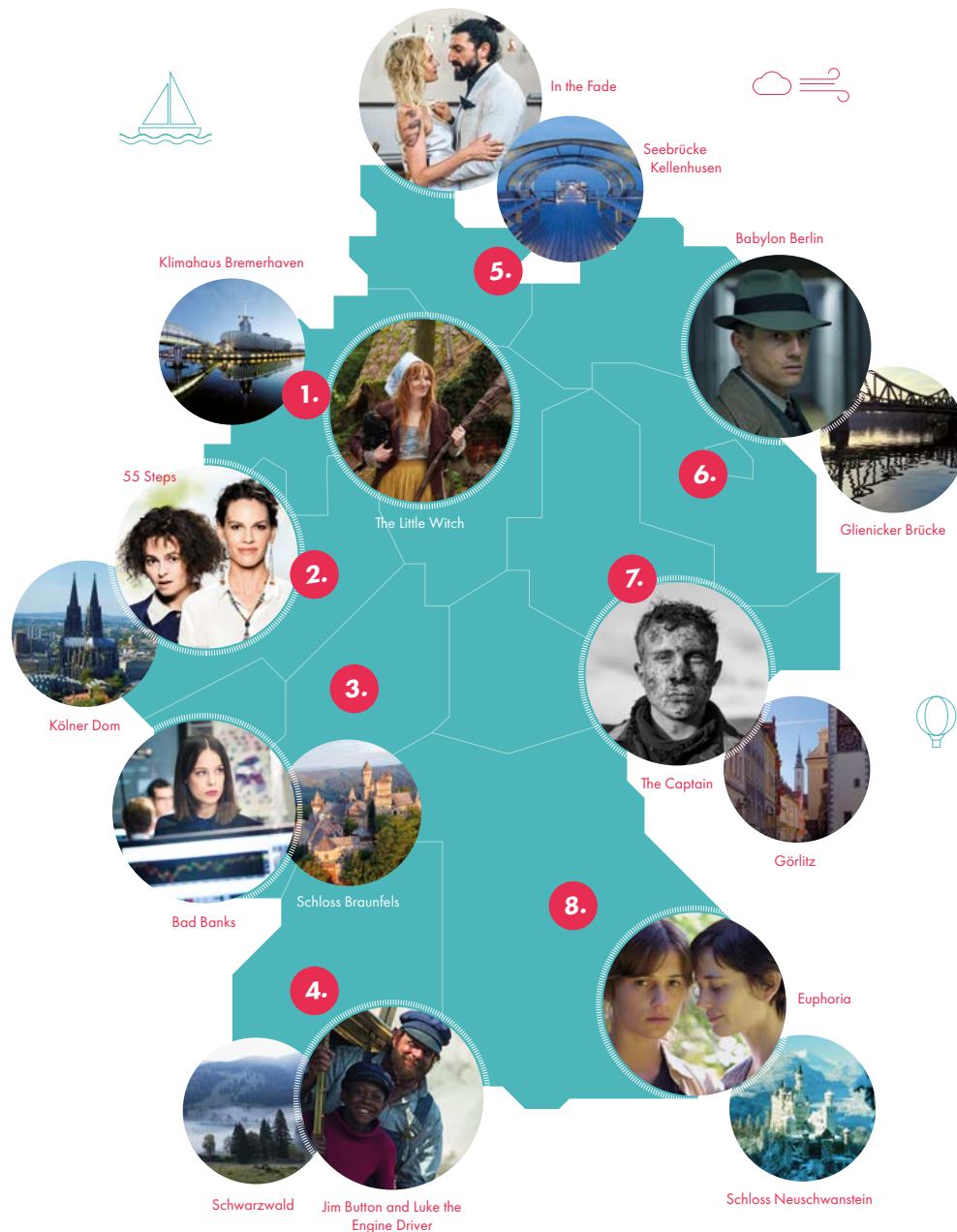
**Film Funding** Christina Bentlage  
[ChristinaBentlage@filmstiftung.de](mailto:ChristinaBentlage@filmstiftung.de) // +49 211 930 50-20  
**Film Commission** Andrea Baaken  
[AndreaBaaken@filmstiftung.de](mailto:AndreaBaaken@filmstiftung.de) // +49 211 930 50-19  
→ annual budget €30 million

**3. hessenfilm und medien**  
Am Steinernen Stock 1 // 60320 Frankfurt am Main  
+49 69 153 24 04 0 // [www.hessenfilm.de](http://www.hessenfilm.de)

**Film Funding** Christiane Leonhardt  
[leonhardt@hessenfilm.de](mailto:leonhardt@hessenfilm.de) // +49 69 153 24 04-80  
**Film Commission** Sandra Duschl  
[filmcommission@hessenfilm.de](mailto:filmcommission@hessenfilm.de) // +49 69 153 24 04-41  
→ annual budget €11.5 million

**4. medien- und filmgesellschaft baden-württemberg (mfg)**  
Breitscheidstraße 4 // 70174 Stuttgart  
+49 711 907 15-300 // [www.mfg.de](http://www.mfg.de)

**Film Funding** Robert Gehring  
[gehring@mfg.de](mailto:gehring@mfg.de) // +49 711 907 15-402  
**Film Commission** Robert Lanig  
[lanig@mfg.de](mailto:lanig@mfg.de) // +49 711 907 15-418  
→ annual budget €15 million



**5. filmförderung hamburg schleswig-holstein (ffhsh)**  
Friedensallee 14-16 // 22765 Hamburg  
+49 40 398 37-0 // [www.ffhsh.de](http://www.ffhsh.de)

**Film Funding** Malika Rabahallah  
[rabahallah@ffhsh.de](mailto:rabahallah@ffhsh.de) // +49 40 398 37-26  
**Film Commission** Alexandra Luetkens  
[location@ffhsh.de](mailto:location@ffhsh.de) // +49 40 398 37-230  
→ annual budget €13.9 million

**6. medienboard berlin-brandenburg**  
August-Bebel-Straße 26-53 // 14482 Potsdam-  
Babelsberg // +49 331 74 38 70  
[www.medienboard.de](http://www.medienboard.de)

**Film Funding** Christian Berg  
[c.berg@medienboard.de](mailto:c.berg@medienboard.de) // +49 331 743 87 23  
**Film Commission** Christiane Raab  
[c.raab@medienboard.de](mailto:c.raab@medienboard.de) // +49 331 743 87 31  
→ annual budget €31.6 million

**7. mitteldeutsche medienförderung (mdm) // saxony, saxony-anhalt, thuringia**  
Hainstraße 17-19 // 04109 Leipzig  
+49 341 269 87-0 // [www.mdm-online.de](http://www.mdm-online.de)

**Film Funding** Dr. Markus Görsch  
[markus.goersch@mdm-online.de](mailto:markus.goersch@mdm-online.de) // +49 341 269 87-12  
**Film Commission** Bea Wölfling  
[bea.woelfling@mdm-online.de](mailto:bea.woelfling@mdm-online.de) // +49 341 269 87-16  
→ annual budget €15.5 million

**8. filmfernsehfonds bayern // bavaria**  
Sonnenstraße 21 // 80331 München  
+49 89 544 60-20 // [www.fff-bayern.de](http://www.fff-bayern.de)

**Film Funding** Nikolaus Prediger  
[nikolaus.prediger@fff-bayern.de](mailto:nikolaus.prediger@fff-bayern.de) // +49 89 544 60-212  
**Film Commission** Anja Metzger  
[anja.metzger@fff-bayern.de](mailto:anja.metzger@fff-bayern.de) // +49 89 544 60-16  
→ annual budget €39 million

## doing the (funding) sums

The funding from the national and regional film funds can be combined in various ways to raise financing for your next film project.

## two examples of financing

### Feature film

- |                               |                  |
|-------------------------------|------------------|
| → Your budget (German spend)  | €35 million      |
| → DFFF approved costs         | €34 million      |
| → DFFF II non-repayable grant | €8.5 million     |
| → Selective regional loan I   | up to €1 million |
| → Selective regional loan II  | up to €1 million |

**you could receive up to  
€10.5 million!**

### High-end drama series

- |                              |                  |
|------------------------------|------------------|
| → Your budget (German spend) | €21 million      |
| → GMPF approved costs        | €20 million      |
| → GMPF non-repayable grant   | up to €4 million |
| → Selective regional loan I  | up to €1 million |
| → Selective regional loan II | up to €1 million |

**you could receive up to  
€6 million!**

